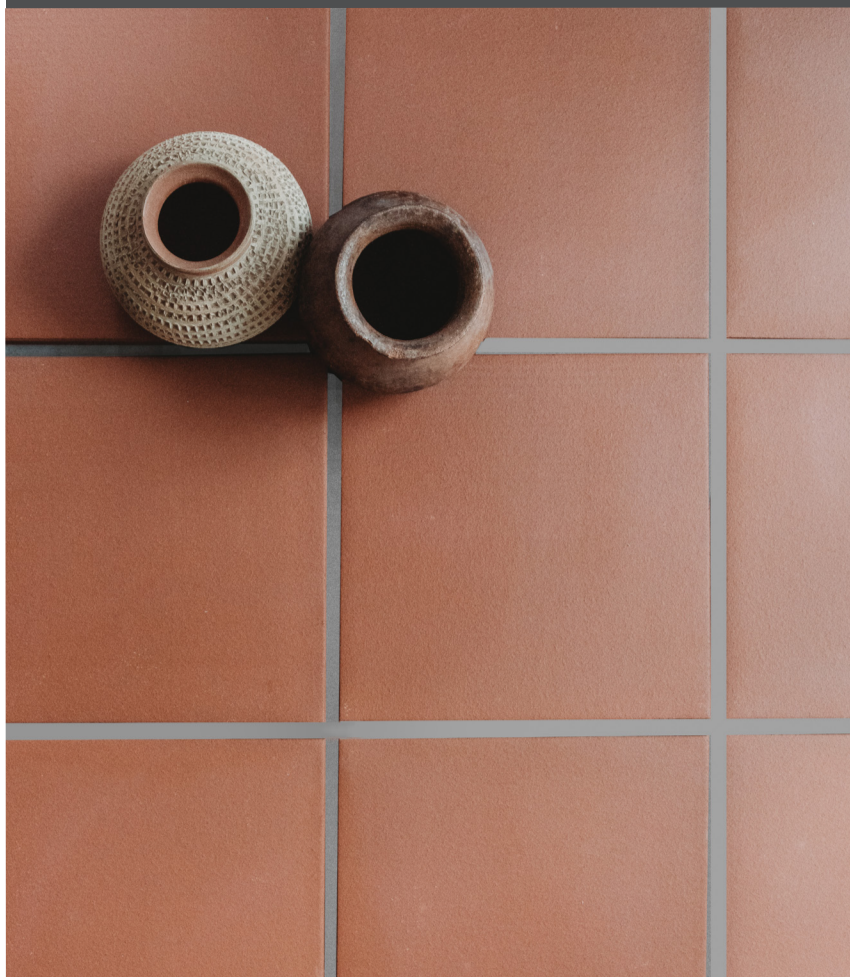
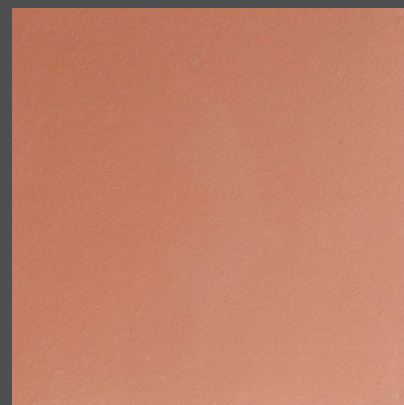


# Cotto Tile

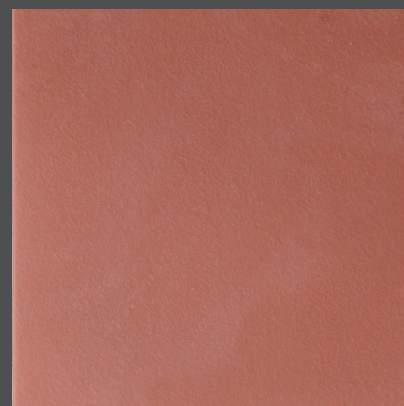
Extruded, unglazed cotto has been around for hundreds of years and is part of ceramic history. The look is classic and works well with many architectural styles.



## Size & Colors



12 x 12 Light Red (CTLR/1212)



12 x 12 Burgundy (CTBY/1212)

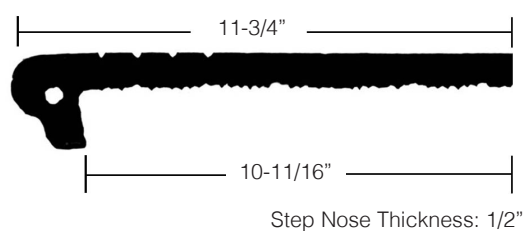
## Trim 12 x 12 Step Nose

Light Red (CTLR/SN)

Burgundy (CTBY/SN)

The Step Nose is slightly thicker than field tile. The Step Nose is produced in a different production and will be a different shade than the field.

## Step Nose Profile



12 x 12 Step Nose



11-3/4"



Colors are intended as a guide only and may vary from actual tile. Sizes listed are nominal. Please check samples before making final selection and to get actual dimensions for layout.

# Quarry Tile

## **6 x 6 less than 5% absorption (quarry style)**

**Size and Color:** Non-Rectified

6 x 6 Burgundy QTBY/66

Colors are intended as a guide only and may vary from actual tile. Sizes listed are nominal. Please check samples before making final selection and to get actual dimensions for layout.

**Trims** Expect variation in size, thickness and color between field and trim.

6 x 6 Cove Base Burgundy QTBY/Q3565

Outside Cove Corner Burgundy QTBY/QC3565

Inside Cove Corner Burgundy QTBY/QB3565



6 x 6 Cove Base



Outside  
Cove  
Corner



Inside  
Cove  
Corner

## **Installation Information**

Due to the extruded production technique, this material has special installation requirements:

- The pieces may be slightly rectangular rather than perfectly square. During installation, they should be set with the linear grooves on the back in alignment (going in the same direction) from piece to piece.
- A minimum grout joint of 3/8" is recommended.
- Although the Cotto Tile is pre-sealed by the factory, that sealant may not offer complete or lasting coverage. It is recommended to seal it (e.g. FILA MP90 Eco Xtreme) after installation. Sealing is part of the tradition of this type of product as it can protect against stains and make long term maintenance easier. From an aesthetic point of view, depending on the kind of sealer, it can either have no change to the appearance or it might enhance the color. It is important to test the sealer on a loose tile before applying it over the entire project to make sure it is the right kind of sealer for the customer's purpose and preference.
- Contrasting grouts should be avoided.