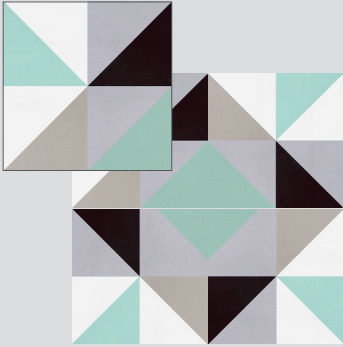
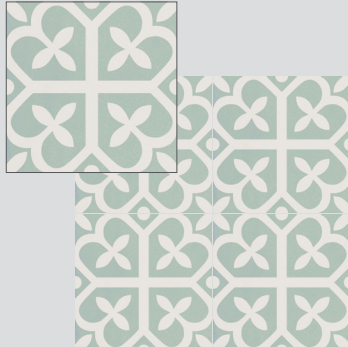


DECO

Elios, a leader in bringing the cementine tradition to porcelain, presents their next generation of decorative tile. This rich, new anthology includes often requested patterns and motifs that come from different times and places. The color palette includes the classic combination of black, white and grey and also expands into new territory offering a warm taupe, a gentle light blue and a serene aqua. Together these decos are a collection that was painstakingly curated with today's tastes in mind.



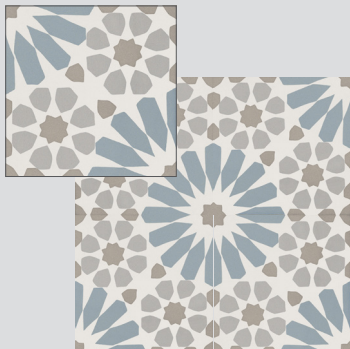
Nordic C



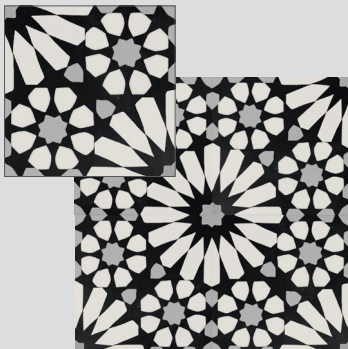
Nordic A



Original Taupe C



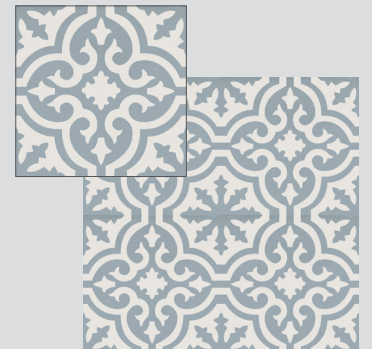
Ethnic Light Blue B



Ethnic Black & White B



Ethnic Nero C



Original Light Blue B

Colors are intended as a guide only and may vary from actual tile. Sizes listed are nominal. Please check samples before making final selection and to get actual dimensions for layout. See reverse side for additional product information.

Sizes - Non-Rectified

8 x 8 Field ESDAWE/88

Field Colors

White ESDAWE

Coordinating Trim

2 1/2 x 8 Surface Bullnose White ESDAWE/SBN

Expect shade variation between field and bullnose.

Nordic C

Many different patterns are possible with Nordic C, here are a few possibilities.

Nordic C (ESDANC/88C) can be set many ways. In fact, the orientation of the pieces can create quite different effects. It is important and recommended that you orient the pieces the way you want them in a dry layout before installation.

8 x 8 Decos



Original Light Blue B
ESDAOL/88LBB



Original Taupe C
ESDAOL/88TC



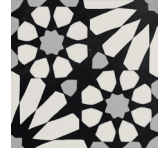
Ethnic Light Blue B
ESDAEC/88LBB



Nordic A
ESDANC/88A



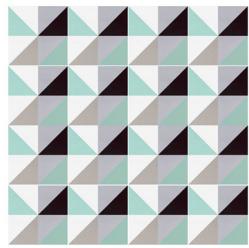
Nordic C
ESDANC/88C



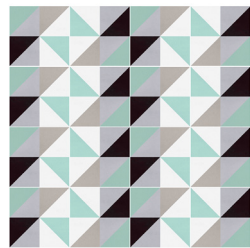
Ethnic Black & White B
ESDAEC/88BWB



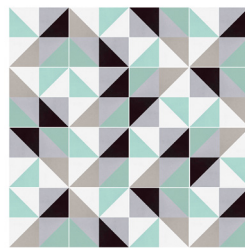
Ethnic Nero C
ESDAEC/88NC



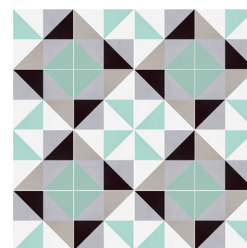
Same Position Repeated



Green and Black Bowties



Random Placement



Green Diamonds and Windmill

Usage & Installation

Deco is suitable for walls and floors including residential and moderate commercial use. Please note that some patterns are complete within a single piece of tile while others need four tiles to complete each pattern. For the designs that require four pieces, Original Taupe C, Ethnic Light Blue B & Ethnic Black & White B, care should be taken during installation to make sure the tiles are correctly placed to achieve the desired final look. The minimum recommended grout joint is 3/32". Please note that the material is non-rectified. If using more than one item together (i.e. field and decos), please check the caliber and be aware that you may have to adjust the size of the grout joint to make your pattern work.

Technical Information

Physical Properties	Norms	Value	Physical Properties	Norms	Value
Water Absorption	10545-3	≤0.5% Conforms	Resistance to Surface Abrasion	10545-7	WE PEI 5
Frost Resistance	10545-12	Resistant			Decos PEI 4
Slip Resistance	DIN51130R	R10	The Coefficient of Friction is a general guide only. For more information see our current handout Americans with Disabilities Act and Slip Resistance of Tile.		
Dynamic (DCOF) Coefficient of Friction	DCOF	≥ 0.42 Wet			

The Coefficient of Friction is a general guide only. Testing may vary with different production runs and with different testing labs. As noted in the American with Disabilities Act (ADA) the coefficient of friction varies considerably due to factors not under the control of entities such as the manufacturers and distributors. These factors include, but are not limited to, contaminants, slope of terrain, drainage conditions, adjacent surfaces, etc. Suitability for any installation can only be determined by a site examination of all conditions that could affect the slip resistance of the tile being installed. Continual cleaning and maintenance must be performed once the tile has been installed.