

FORMAVIVA

Formaviva is a collection born to evoke calm, timeless elegance, and a sense of contemporary ceramic craftsmanship.

Its 5x10 porcelain size - compact and harmonious - is cloaked in a glossy glaze with the depth and vibrancy of antique enamel. The glaze is thick and luxurious, and it is glossy without being overly reflective, creating a surface that catches the light like still water. A single finish unites all three elements of the collection: the smooth base tile, refined in its purity, and the graceful Botanic and Woven decorations, where form becomes a quiet expression of beauty.



Permagenta



Argilla



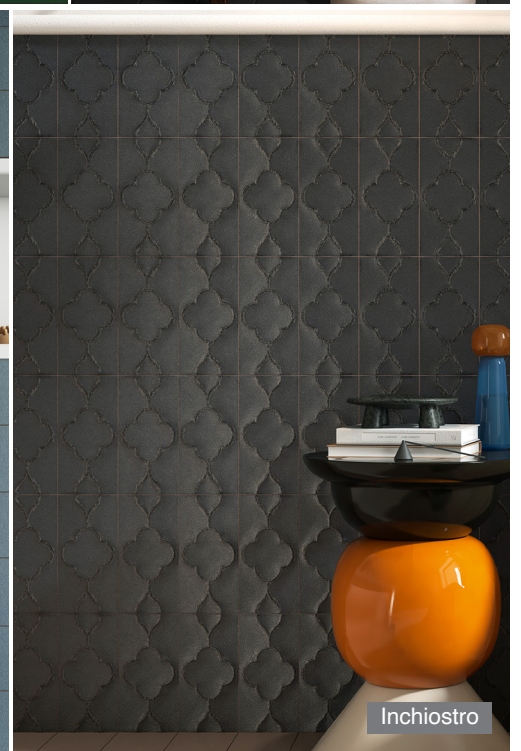
Tufo



Salvia



Vintage Blue

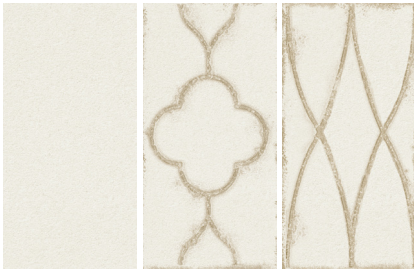


Inchiostro

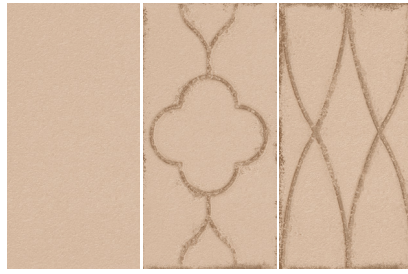
Colors are intended as a guide only and may vary from actual tile. Please check tile samples before making final selections. See reverse side for additional product information.

Product Information

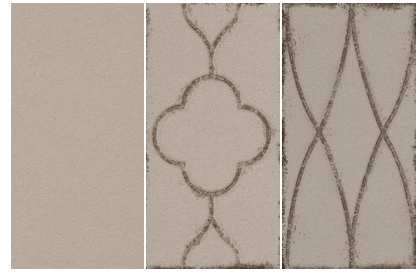
Colors and Size (Non-Rectified) - 5 x 10 (Flat) SAFA--/510



SAFAPA Pergamena



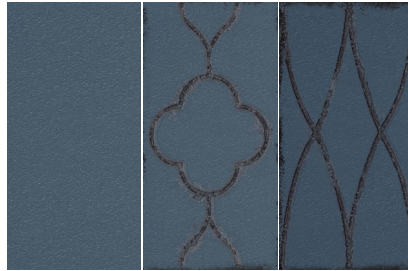
SAFAAA Argilla



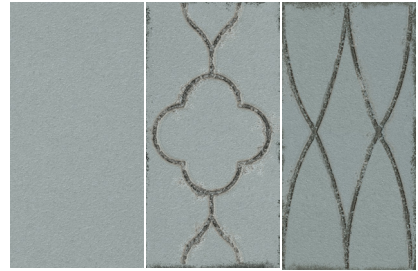
SAFATO Tufo



SAFAIO Inchiostro



SAFAVB Vintage Blue



SAFASA Salvia

Decos (Non-Rectified)

5 x 10 Botanic SAFA--/510B



5 x 10 Woven SAFA--/510W



The Botanic and Woven decos each have a pattern that is pressed into the clay body, so it has a raised structure, and then glazed in a contrasting color. The deco glaze colors were carefully studied for each field, and there is shading to give the look of an old tile that has been rediscovered. The tiles also have the darker shading around their edges to add to the vintage appeal. This is an intentional characteristic and adds to the final look and feel of the installation. Care should be taken to have the pattern align from piece to piece to create a continuous flow.

Coordinating Trim Expect variation in color and size between field and trims.

1/2 x 12 Miter Bullnose SAFA--/MBN

Installation Information

Formaviva is intended for walls. As a porcelain, it may be suitable for some residential floors that do not require DCOF, but it should be noted that, as with all glossy glazes, it may be subject to scratching. This is especially true for the dark colors like Inchiostro and Vintage Blue.

The minimum recommended grout joint is 3/32". Please note that this material is non-rectified. If using more than one item together, please check the sizing and be aware that you may have to adjust the size of the grout joint to make your pattern work. It is important to work with the layout, mixing pieces within each carton and pulling from several cartons, to get the proper blend. Care should be taken during installation to make sure the tiles are correctly placed to achieve the desired final look. Due to different production techniques and times, expect variation in size and color between field and trim.