

# PULSE

by SARTORIA



Moss 1-5/8 x 12 Prism



Copper 1-5/8 x 12 Flat & Prism

Colors are intended as a guide only and may vary from actual tile. Sizes listed are nominal. Please check samples before making final selection and to get actual dimensions for layout. See reverse side for additional product information.

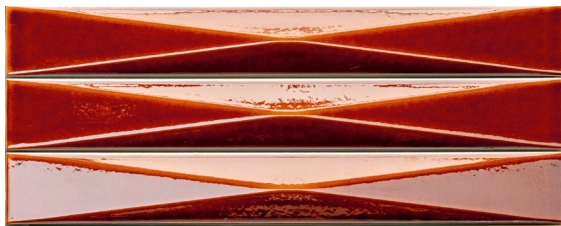
Sartoria's Pulse is aptly named for both the word's meanings. They certainly have their finger on the pulse of what is hot in ceramic tile, and the beauty of these two colors is sure to make your heart beat faster. With Pulse they are playing with glaze and surface structure. By using reactive glazes, they are able to achieve deep jewel tones with the lavish depth they deserve. The craquele effect adds to that depth and makes the flat tile complex and beautiful on its own. When combined with the Prism structure, the full effect is realized where the angles are exploited to create games of shadows and reflections. The reactive glazes make this a specialty tile that feels like a hand-crafted material which means that there will be slight imperfections in the glaze and surface that add to the character of the product.

### Colors and Sizes - Non-Rectified

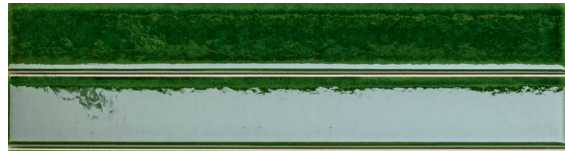
Copper 1-5/8 x 12 Flat (SAPECR/212)



Copper 1-5/8 x 12 Prism (SAPECR/212P)



Moss 1-5/8 x 12 Flat (SAPEMS/212)



Moss 1-5/8 x 12 Prism (SAPEMS/212P)



Due to the nature of this special material, orders for Pulse Flat and Prism must be for full boxes only. Please note that we do not accept returns in general. In the rare occurrence that we make an exception and do take a return of this product, only factory sealed full boxes can be accepted.

**Coordinating Trim** Expect variation in color and size between field and trims.

1/2 x 8 Surface Bullnose (Pencil Bullnose/Jolly) SAPE--/18SBN (COMING SOON)

### Installation Information

Pulse is intended for interior walls. If installing with a cement-based adhesive, it is recommended to use flexible setting materials that meet the ISO S1 standard (e.g. Servolight by Kiesel). All substrates should be properly reinforced to be sure there is no movement. Wood studs need to be dry and properly braced with a minimum depth of 3 1/2". For mortar installations, the mortar bed has to be cured (less than 2% humidity) and has to have proper reinforcing. The factory says that it is not required to seal the Pulse craquele, but it is advisable especially in areas subject to grease and oils like a kitchen backsplash. If sealing, Fila's MP90 Eco Xtreme is recommended. Pulse is not recommended for steam showers. As with all craquele material, contrasting dark grouts, especially black, should not be used.

PLEASE NOTE: Moss and Copper colors are produced with a craquele glaze, characterized by tiny surface cracks that contribute to their unique appearance. However, this type of glaze uses metal to achieve its reactive nature and is somewhat delicate. It may react negatively to acid products or aggressive cleaning agents, and they should not be used. It is recommended to use neutral detergents for cleaning, both immediately after laying and for daily maintenance. It is important to avoid the use of anti-limescale products, as they may dull the surface and impair its appearance.